

ground floor offices

Unit No.	Area m ²	Area f ²
1	40.1	432
2	40.4	435
3	36.7	395
4	35.5	382
5	27.2	293
6	28.8	310
7	40.6	437
8	36.2	390
9	25.3	272
10	25.1	270
11	28.4	306
12	16.9	182
14	19.8	213

workshop units

Unit No.	Area m ²	Area f ²
59	54.2	583
60	54.6	587
61	67.5	726
62	67.5	726
63	61.3	659
64	60.3	649
65	59.3	638
66	60.1	646
67	60.1	646
68	66.4	714
69	66.4	714
70	48.8	525
71	48.8	525
72	39.5	425
73	39.5	425
74	39.5	425
75	38.4	413

first floor

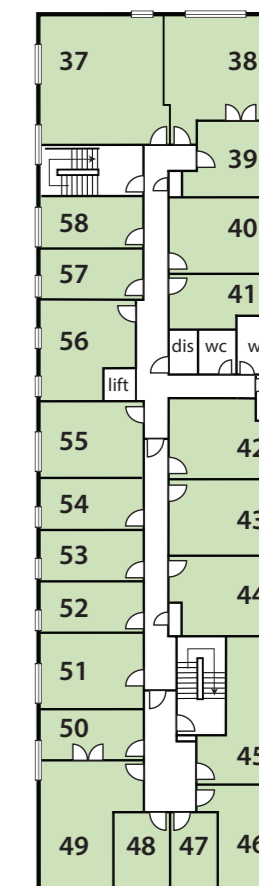
Unit No.	Area m ²	Area f ²
15	51.7	556
16	42.9	462
17	23.3	251
18	22.5	242
19	25.2	272
20	27.3	293
21	28.8	310
22	28.4	305
23	132.2	1423
28	16.9	182
29	25.7	276
30	17	183
31	16.9	182
32	16.7	180
33	25.1	270
34	28.4	306
35	16.9	182
36	17.1	184

second floor

Unit No.	Area m ²	Area f ²
37	51.7	556
38	42.8	460
39	23.3	250
40	28.8	310
41	18.4	199
42	28.5	307
43	28.6	308
44	28.3	304
45	33.2	357
46	24	258
47	12.1	130
48	14.3	154
49	35.2	379
50	16.9	182
51	25.7	276
52	17	183
53	16.9	182
54	16.7	180
55	25.1	270
56	28.4	306
57	16.9	182
58	17.1	184



first floor



second floor

Basepoint Business Centre Tewkesbury